

The one-way valve

The one-way valve RSV

The one-way valve RSV



Introduction and application

- ◆ The one-way valve is provided with a return spring, which is used for maintaining the vacuum degree of the conveying system when the power supply fails or the vacuum generating device fails.
- ◆ As a valve seat, the one-way valve has a wide nominal diameter range and a very small size.
- ◆ Close the vacuum tube, for example, the valve can maintain the vacuum degree of the whole system when power is suddenly cut off, and the nominal flow rate can be from extremely low to extremely high, which is suitable for use in narrow spaces.



The technical parameters and order number of the one-way valve RSV

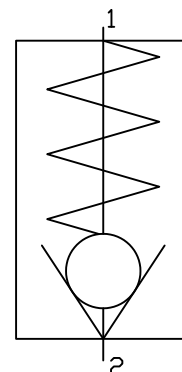
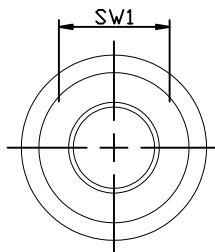
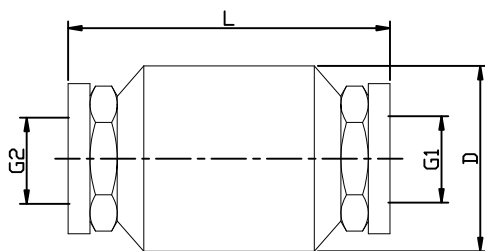
Type	Nominal diameter [mm]	Nominal flow rate		Working pressure [mbar]	Working temperature [°C]	Weight [g]	Ordering Data
		[m ³ /h]	[l/min]				
RSV-G3/8-IG	14	20	333	20	-20...100	180	90.06.01.00067
RSV-G1/2-IG	18	26	433	20	-20...100	190	90.06.01.00068
RSV-G3/4-IG	20	45	750	20	-20...100	270	90.06.01.00069
RSV-G1-IG	28	75	1250	20	-20...100	490	90.06.01.00070
RSV-G1-1/4-IG	36	125	2083	20	-20...100	740	90.06.01.00071
RSV-G1-1/2-IG	42	200	3333	20	-20...100	980	90.06.01.00072
RSV-G2-IG	54	350	5833	20	-20...100	1100	90.06.01.00073



Design Data of the one-way valve RSV

RSV

Design Data of the one-way valve RSV
(1=Vacuum Generator; 2=Vacuum Suction Cup)



Type	Dimensions[mm]					
	D	G1	G2	L	SW1	
RSV-G3/8-IG	34	G3/8-F	G3/8-F	59	23	
RSV-G1/2-IG	34	G1/2-F	G1/2-F	62	27	
RSV-G3/4-IG	41	G3/4-F	G3/4-F	69	33	
RSV-G1-IG	52	G1-F	G1-F	84	40	
RSV-G1-1/4-IG	63	G1-1/4-F	G1-1/4-F	88	50	
RSV-G1-1/2-IG	71	G1-1/2-F	G1-1/2-F	96	50	
RSV-G2-IG	87	G2-F	G2-F	100	70	